



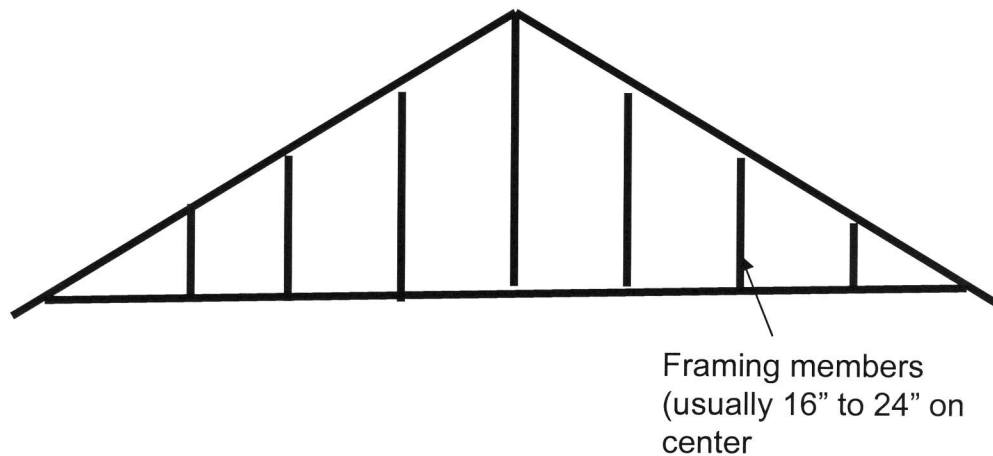
Technical Product Installation
Specification
Gene Bassham Technical
Services & Quality Assurance
Manager
gbassham@fifoil.com
(800) 448-3401

Fi-Foil Company, Inc.

Gable End Application

Radiant Shield XT (Perforated Version)

Radiant Barrier



Application:

Radiant Shield XT (perforated) staples to the outside of gable end.

1. Measure working area outside gable and cut lengths with razor knife to run horizontal.
2. Install first run horizontal across on outside of gable attaching to framing members with staples every 4" to 8".
3. Install second run lapping 2 inches over the first run.
4. Continue until gable end is completed.
5. Install specified siding components per specifications and attach per their manufacturer's instructions.