

WINDOW FLASHING

A GUIDE TO INSTALLATION

METHOD "A"

SELF ADHESIVE FLASHING

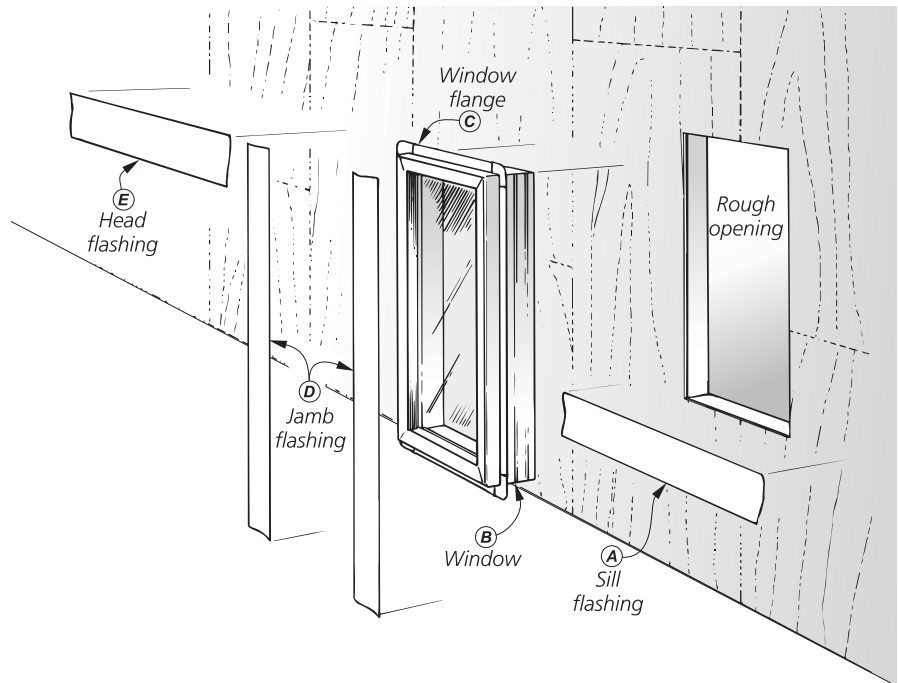
The "Method A", installation guide is designed for integral flanged window applications, where the window is installed before the weather resistive barrier is applied. Compliance with the building code and proper installation are critical in reducing potential water leakage points.

Under adverse weather conditions, the installer may consider using "Method B" with mechanically attached flashing.

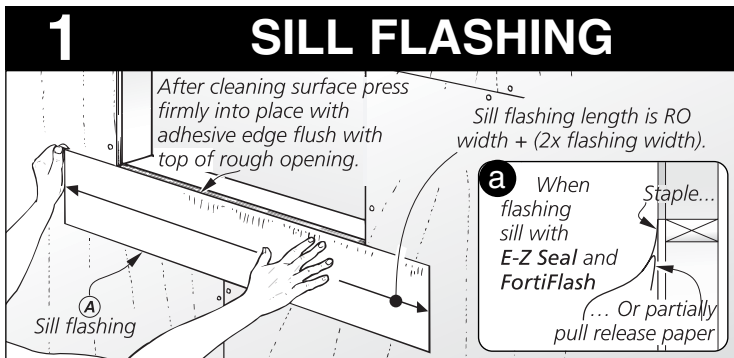
The following **Fortifiber Building Systems Group™** flexible window flashing products are acceptable for this method:

- **Moistop E-Z Seal® Self Adhesive Flashing**
6, 9, 12 inch x 75' rolls
- **FortiFlash® Self Adhesive Waterproof Flashing Membrane**
4, 6, 9, 12, 18, 36 inch x 75' rolls
- **Moistop® Sealant**
(Exceeds AAMA Standards)

THIS INSTALLATION GUIDE REFERENCES THE **AMERICAN ARCHITECTURAL MANUFACTURERS ASSOCIATION** PUBLICATION 2400-02.

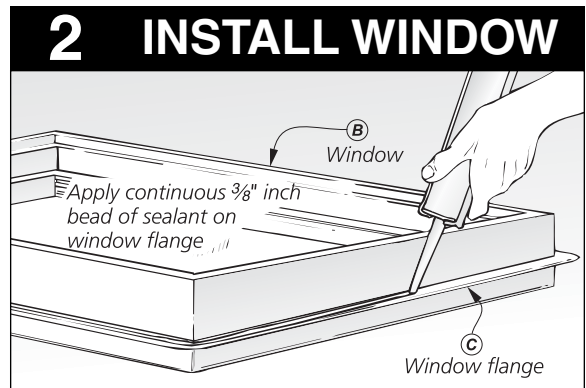


Consideration should be given to preparing the substrate for best adhesion. We suggest you review Forti-Facts Technical sheet available at www.fortifiber.com. Or for further assistance, please call our technical hotline at, (800) 773-4777.



Cut the sill flashing (the width of the rough opening + 2x the width of the flashing). Wipe the exterior sheathing or wall with a clean rag to ensure proper adhesion. Remove the release paper and press the sill flashing in place so that the top edge of the flashing's adhesive is level with the top edge of the rough opening. Once pressed in place, use a "J" roller (or wall-paper seaming tool) to seal the flashing to the sheathing.

Note: when using **FortiFlash**, either remove only the top part of release paper or staple to allow for integration with weather resistive barrier (1a). Once the weather barrier has been tucked under the sill flashing, remove the release paper and press firmly into place.

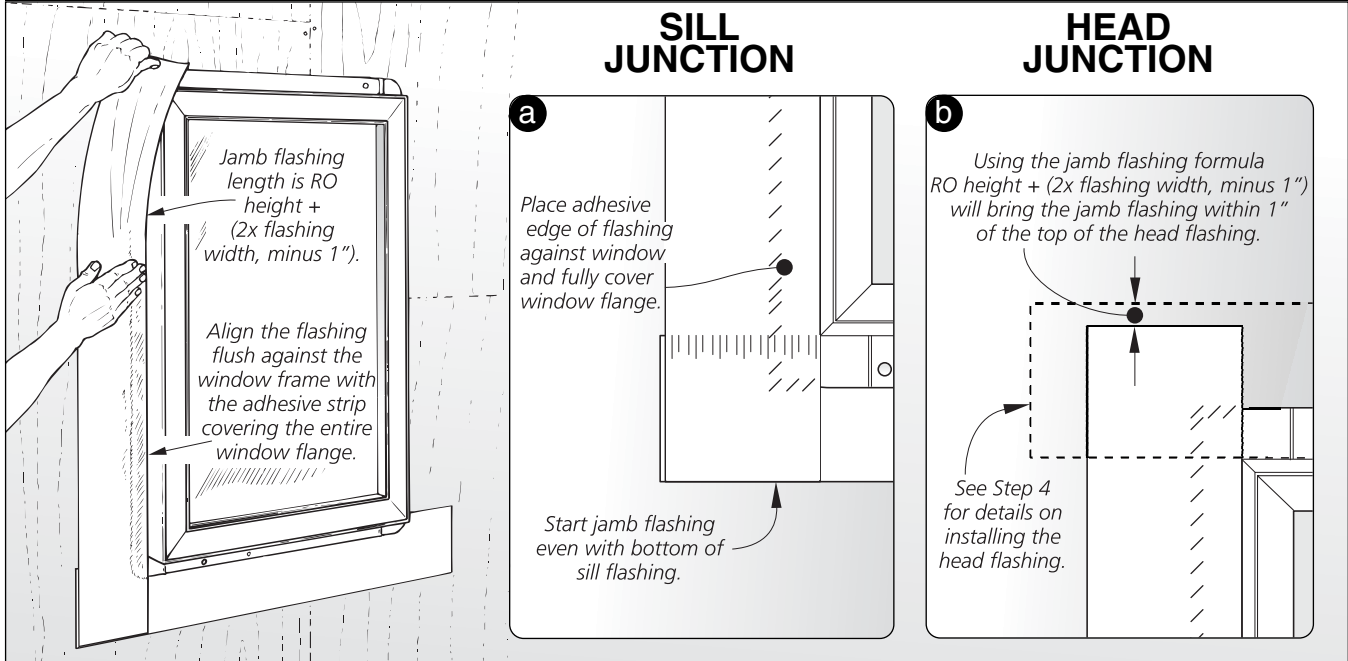


Before installing the window, apply a continuous 3/8" bead of **Moistop Sealant** to the backside (interior) of the mounting flange. Install the window according to the window manufacturer's instructions.

CONTINUED ON BACK...

3

JAMB FLASHING

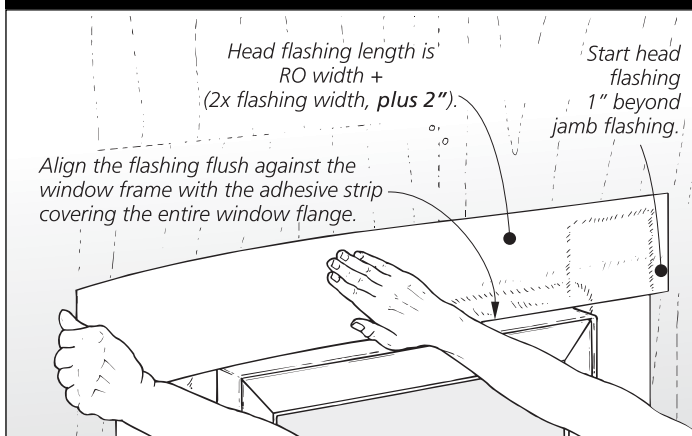


Prior to installing the jamb flashing wipe the window jamb flange and exterior walls with a clean rag to ensure proper adhesion. Cut the jamb flashing (rough opening height, + 2x the width of the flashing, minus 1") see **3a** and **3b**. Remove the release paper and place the jamb

flashing against the window flange and firmly press into place in single direction to prevent voids. Once pressed in place, use a "J" roller (or wallpaper seaming tool) to seal the flashing to the window flange. Repeat this procedure for the other side of the window.

4

HEAD FLASHING

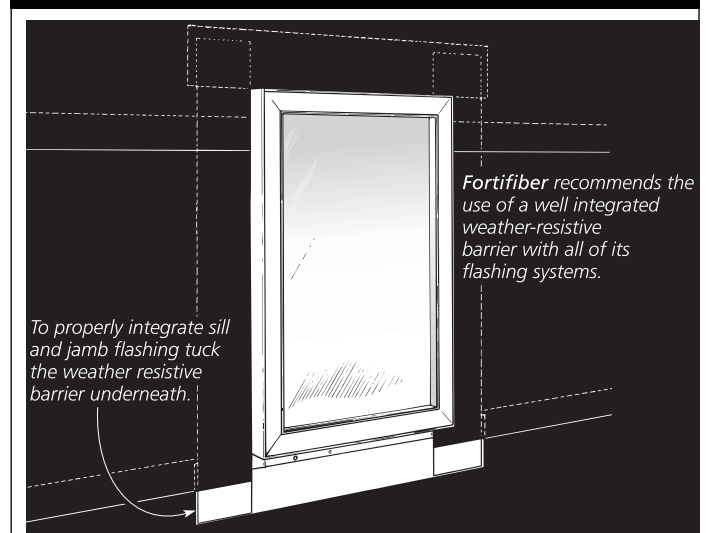


Wipe the head flange, jamb flashing, and sheathing with a clean rag. **Note:** The length of the head flashing is the width of the rough opening + 2x the width of the flashing plus 2". Install the head flashing by pressing firmly in place in one direction to prevent voids.

Call 1-800-773-4777 for Technical Assistance
www.fortifiber.com

Limitations: For optimum adhesion, **Moistop E-Z Seal**, and **FortiFlash**, flashing should be applied at temperatures between 40° F (4.4° C) and 120° F (48.9° C) Product should not be installed horizontally or at a slope of less than 60°. Product should be covered as soon as possible. Inspect product to insure it is free of any protrusions or damage which may compromise its moisture-resistive properties. **FortiFlash** is not compatible with EPDM or flexible (plasticized) Polyvinyl Chloride (PVC) based membranes. **FortiFlash** also is not compatible with some sealants. Consult with sealant manufacturer for compatibility information.

OVERVIEW



This recommendation refers to the most common types of windows used (surface mounted). For other types of frames, special attention should be paid to the window manufacturer's instructions.



Fortifiber Building Systems Group™

Protecting Your World from the Elements™